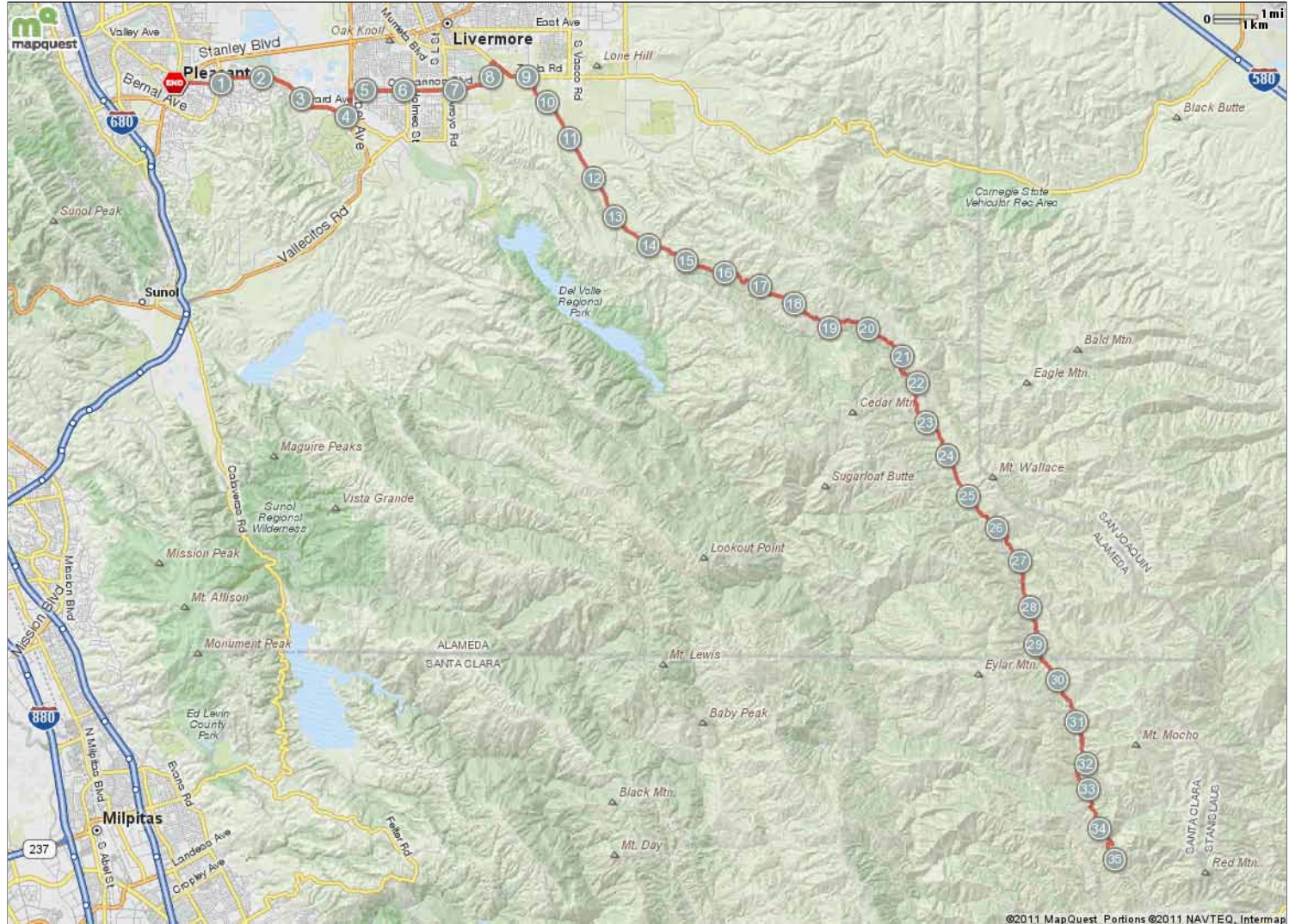


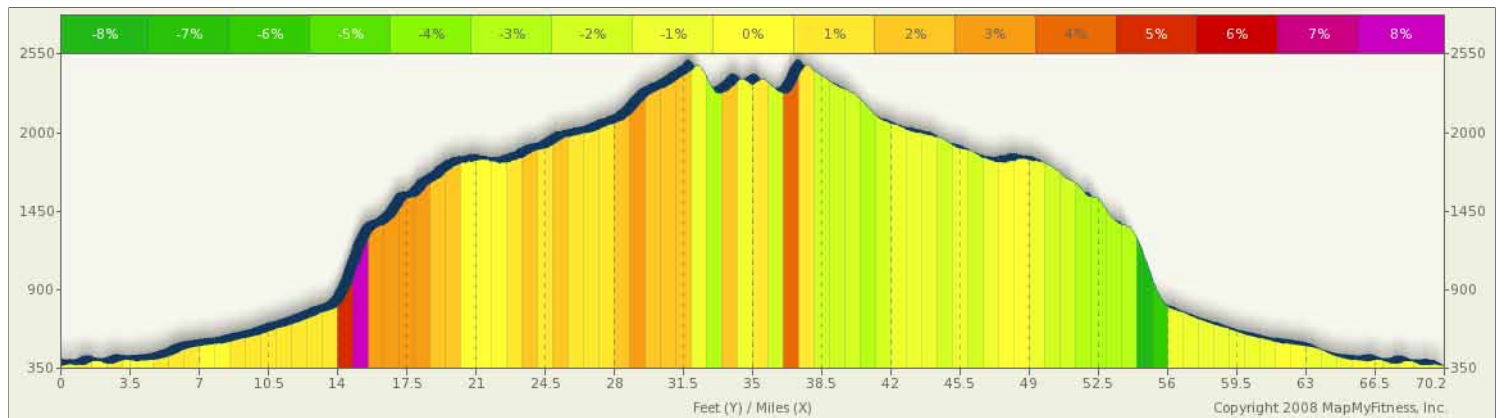
TheCyclePros - Mines Road Out and Back (all groups)

Starts In Pleasanton, California

69.91 miles



©2011 MapQuest Portions ©2011 NAVTEQ, Intermap

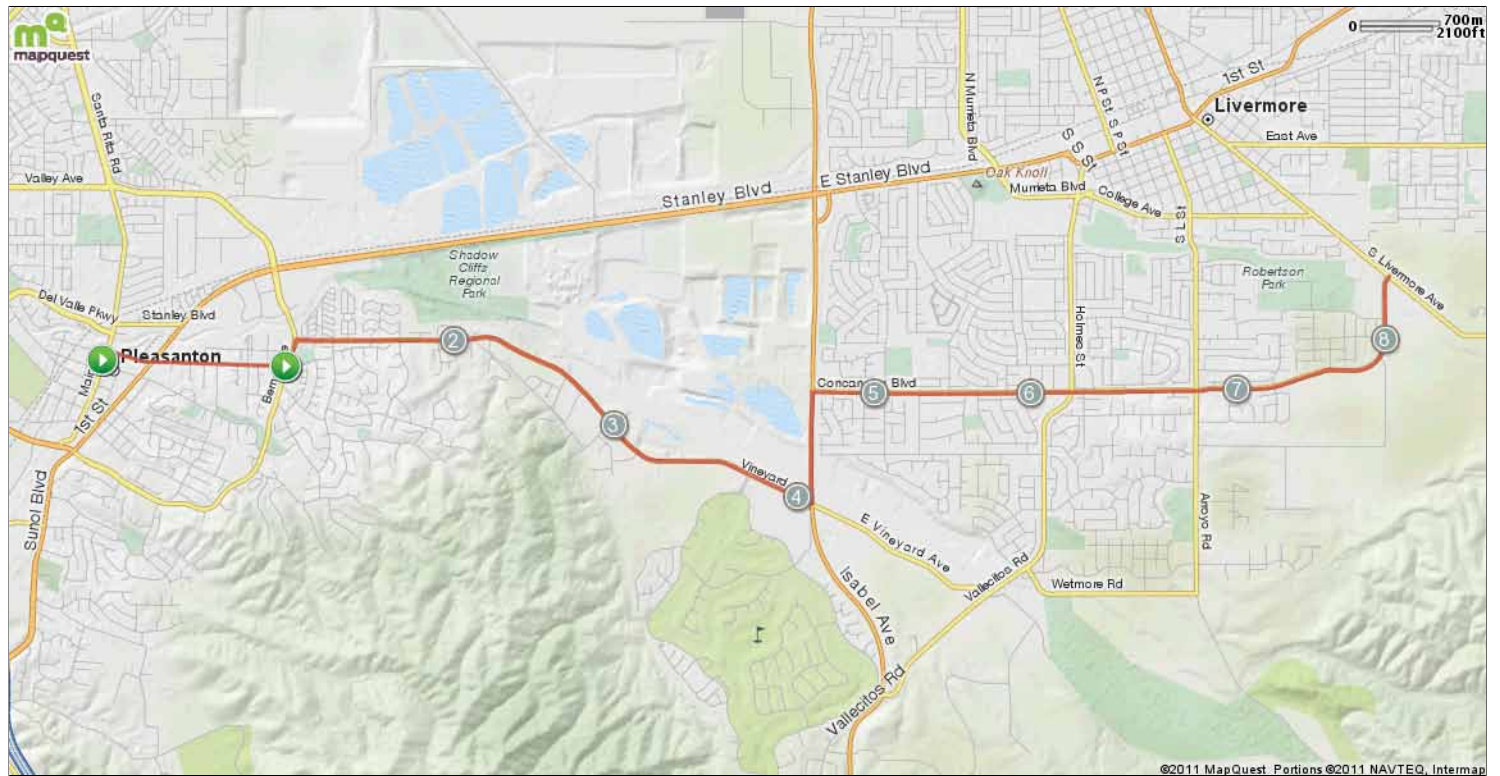


Copyright 2008 MapMyFitness, Inc.

Description

TheCyclePros - Mines Road Out and Back (all groups)

Starts In Pleasanton, California

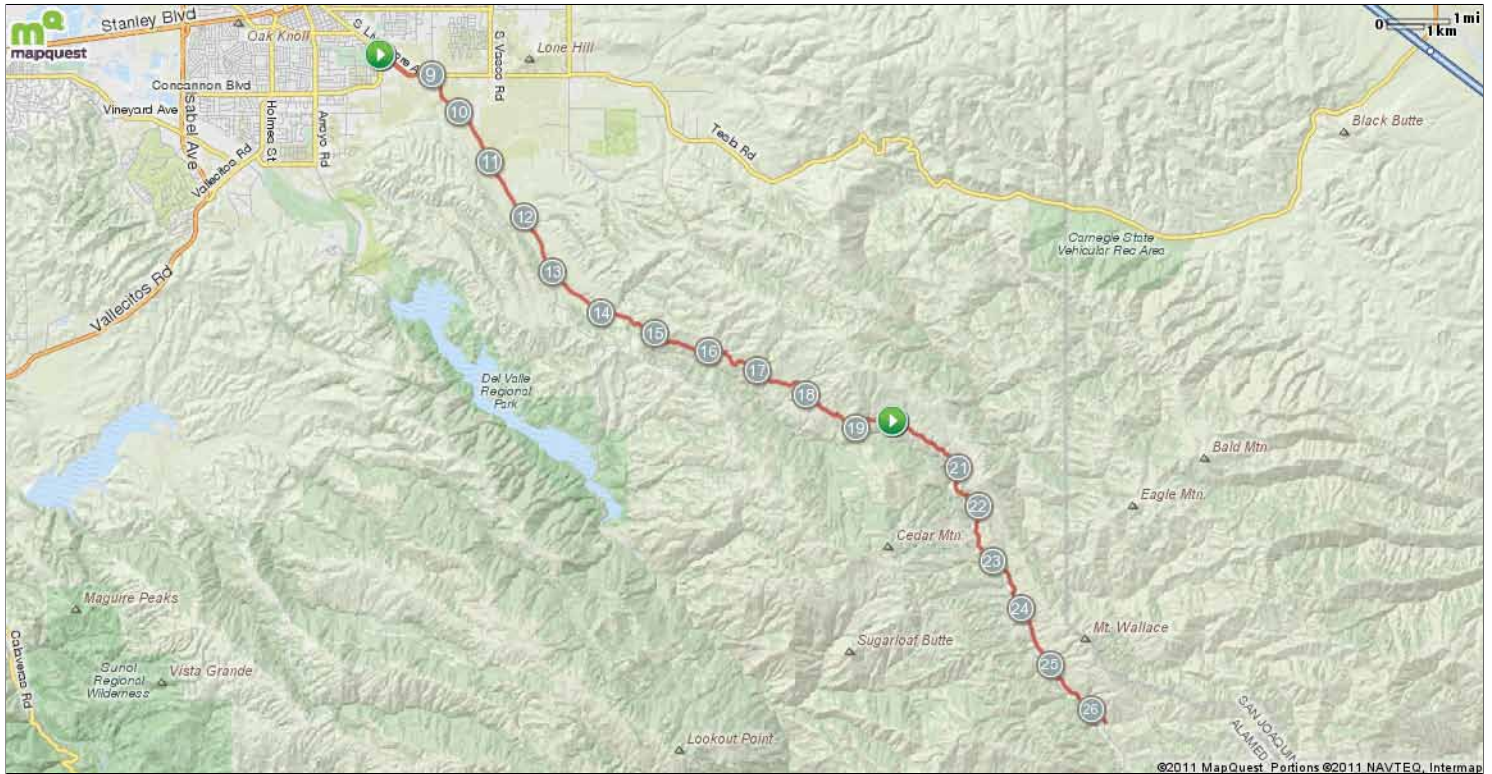


Notes		
AT	FOR	NOTES
	266ft	Start
0.05 mi.	1324ft	Turn right at Ray St
0.3 mi.	3827ft	Continue onto Vineyard Ave
1.03 mi.	783ft	Turn left at Bernal Ave
This segment shows 1.15 mi. (6,077 ft.) of your route.		

Notes		
AT	FOR	NOTES
1.17 mi.	3mi 348ft	Take the 1st right onto Vineyard Dr
4.24 mi.	3179ft	Turn left at Isabel Ave
4.84 mi.	3mi 2774ft	Take the 1st right onto Concannon Blvd
8.37 mi.	2635ft	Turn right at S Livermore Ave
This segment shows 7.66 mi. (40,443 ft.) of your route.		

TheCyclePros - Mines Road Out and Back (all groups)

Starts In Pleasanton, California

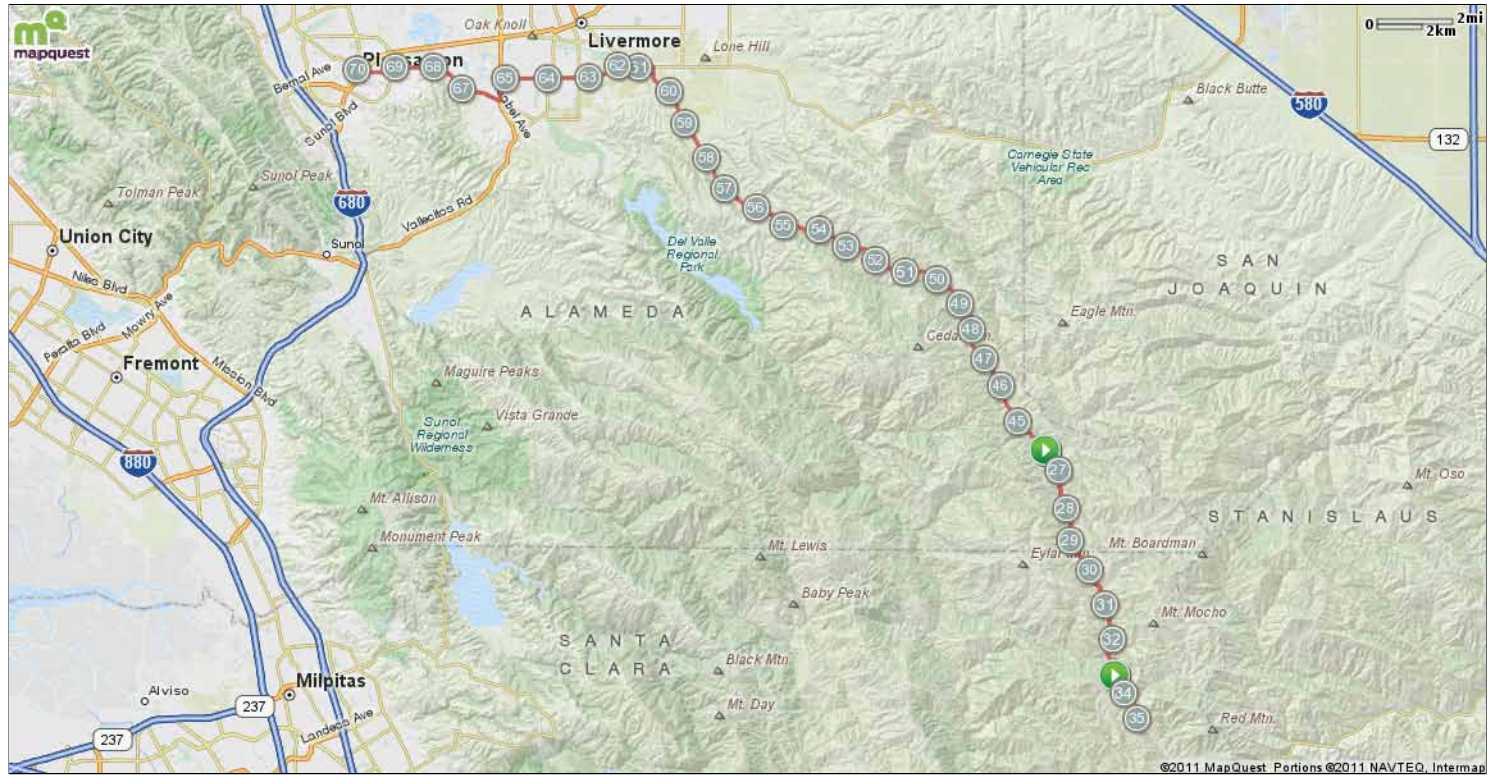


Notes			
AT	FOR	NOTES	
8.87 mi.	↑	2701ft	Continue onto Tesla Rd
9.38 mi.	→	3mi 2726ft	Turn right at Mines Rd
12.89 mi.	←	6mi 4398ft	Take the 1st left to stay on Mines Rd
19.73 mi.	→	6mi 3213ft	Take the 1st right to stay on Mines Rd
This segment shows 11.37 mi. (60,009 ft.) of your route.			

Notes			
AT	FOR	NOTES	
26.34 mi.	→	7mi 533ft	Take the 1st right to stay on Mines Rd
This segment shows 6.71 mi. (35,454 ft.) of your route.			

TheCyclePros - Mines Road Out and Back (all groups)

Starts In Pleasanton, California



Notes		
AT	FOR	NOTES
33.44 mi.	137ft	Slight right
This segment shows 7.11 mi. (37,562 ft.) of your route.		

Notes		
AT	FOR	NOTES
33.46 mi.	137ft	Slight right
This segment shows 36.79 mi. (194,259 ft.) of your route.		