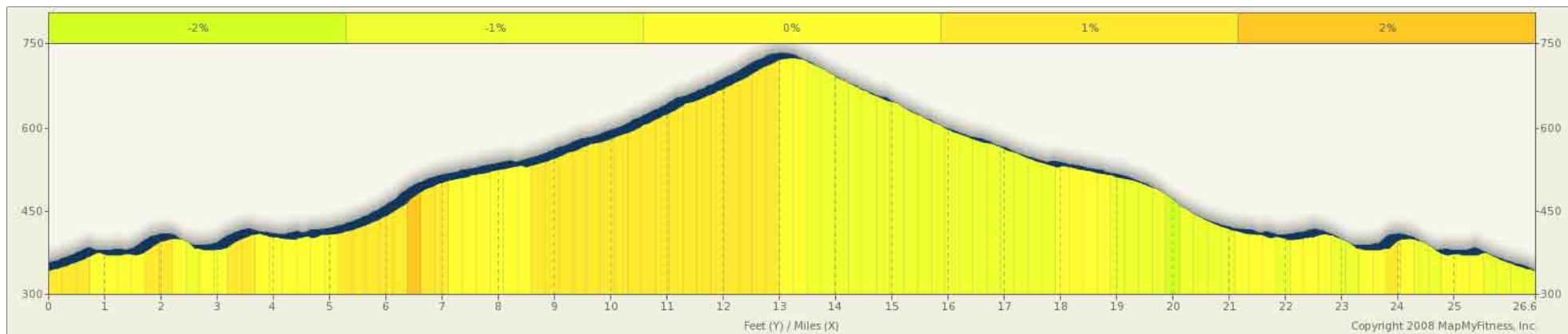
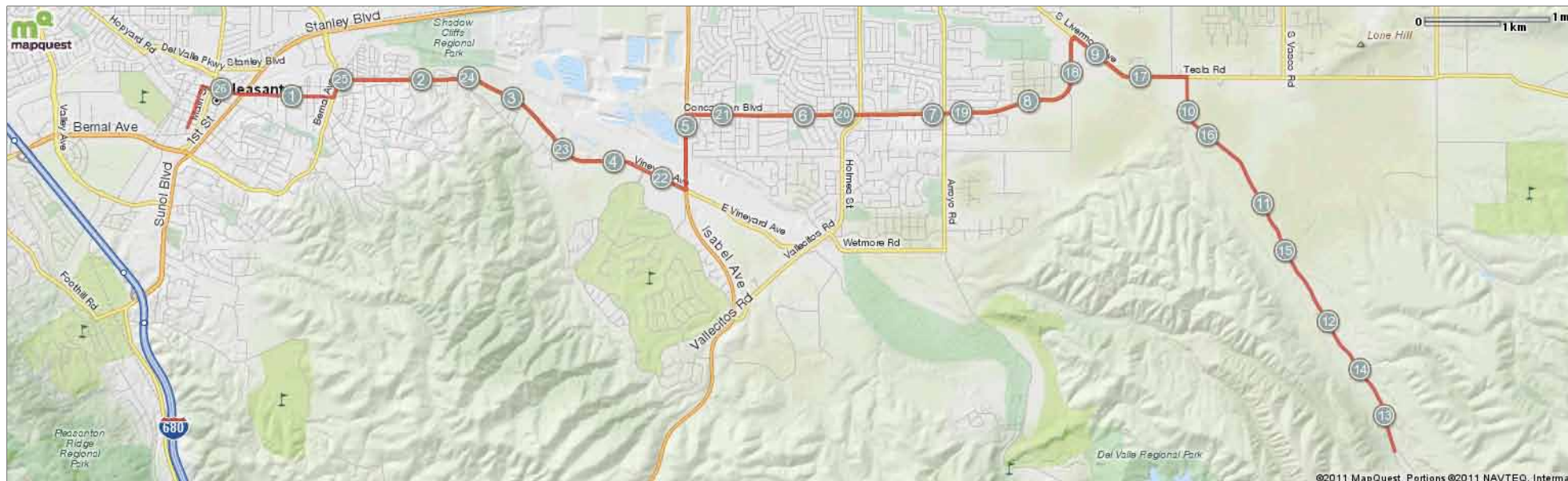


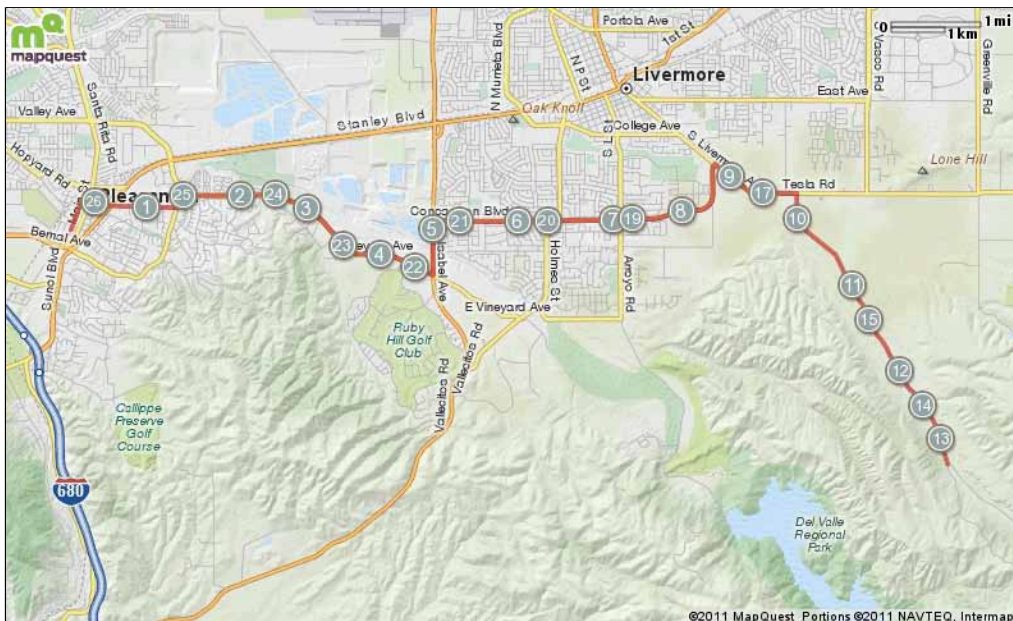
# Del Valle out and back

Starts In Pleasanton, California

## 26.53 miles



Description



© MapMyFitness, LLC, All Rights Reserved, 2005-2008 | View more maps online at:  
 Find this route online at [mapmyride.com/routes/view/13229182](http://mapmyride.com/routes/view/13229182)  
 Distance values on this map may differ slightly from values reported on the route engine.

Notes

AT	FOR	NOTES
	1844ft	Start
0.35 mi.	423ft	Turn right at St John St
0.43 mi.	191ft	Turn right at Main St
0.47 mi.	1324ft	Take the 1st right onto Ray St
0.72 mi.	3827ft	Continue onto Vineyard Ave
1.44 mi.	782ft	Turn left at Bernal Ave
1.59 mi.	3mi 360ft	Take the 1st right onto Vineyard Dr

This segment shows 1.61 mi. (8,509 ft.) of your route.

Notes

AT	FOR	NOTES
4.66 mi.	3179ft	Turn left at Isabel Ave
5.26 mi.	3mi 2775ft	Take the 1st right onto Concannon Blvd

This segment shows 7.2 mi. (37,995 ft.) of your route.

Notes

AT	FOR	NOTES
8.79 mi.	2635ft	Turn right at S Livermore Ave
9.28 mi.	2701ft	Continue onto Tesla Rd
9.8 mi.		Turn right at Mines Rd

This segment shows 17.84 mi. (94,199 ft.) of your route.